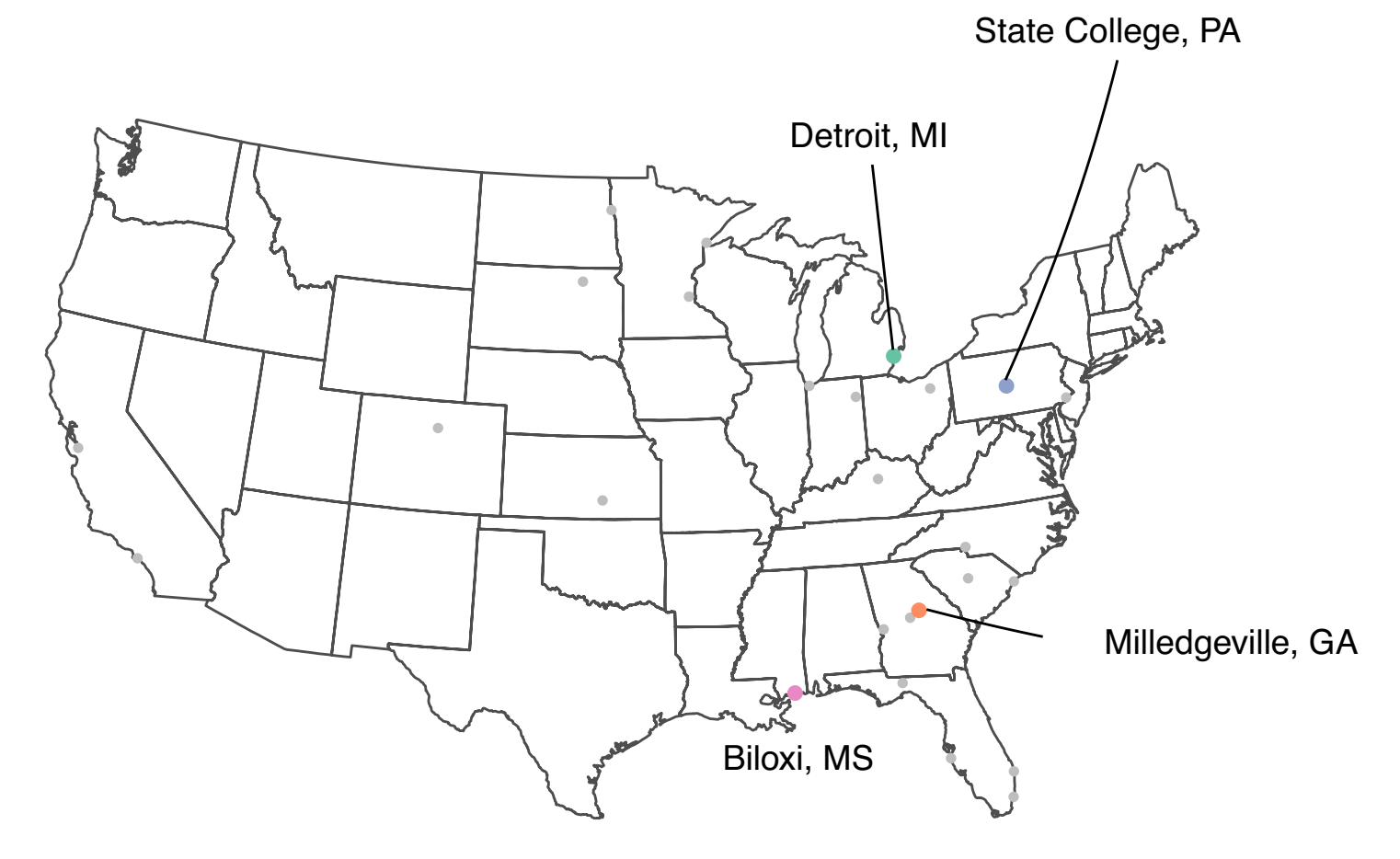


A Tale of Four Cities

Exploring the Soul of Biloxi, Detroit, Milledgeville, and State College

Karsten Maurer, Dave Osthus, Adam Loy
 Department of Statistics, Iowa State University

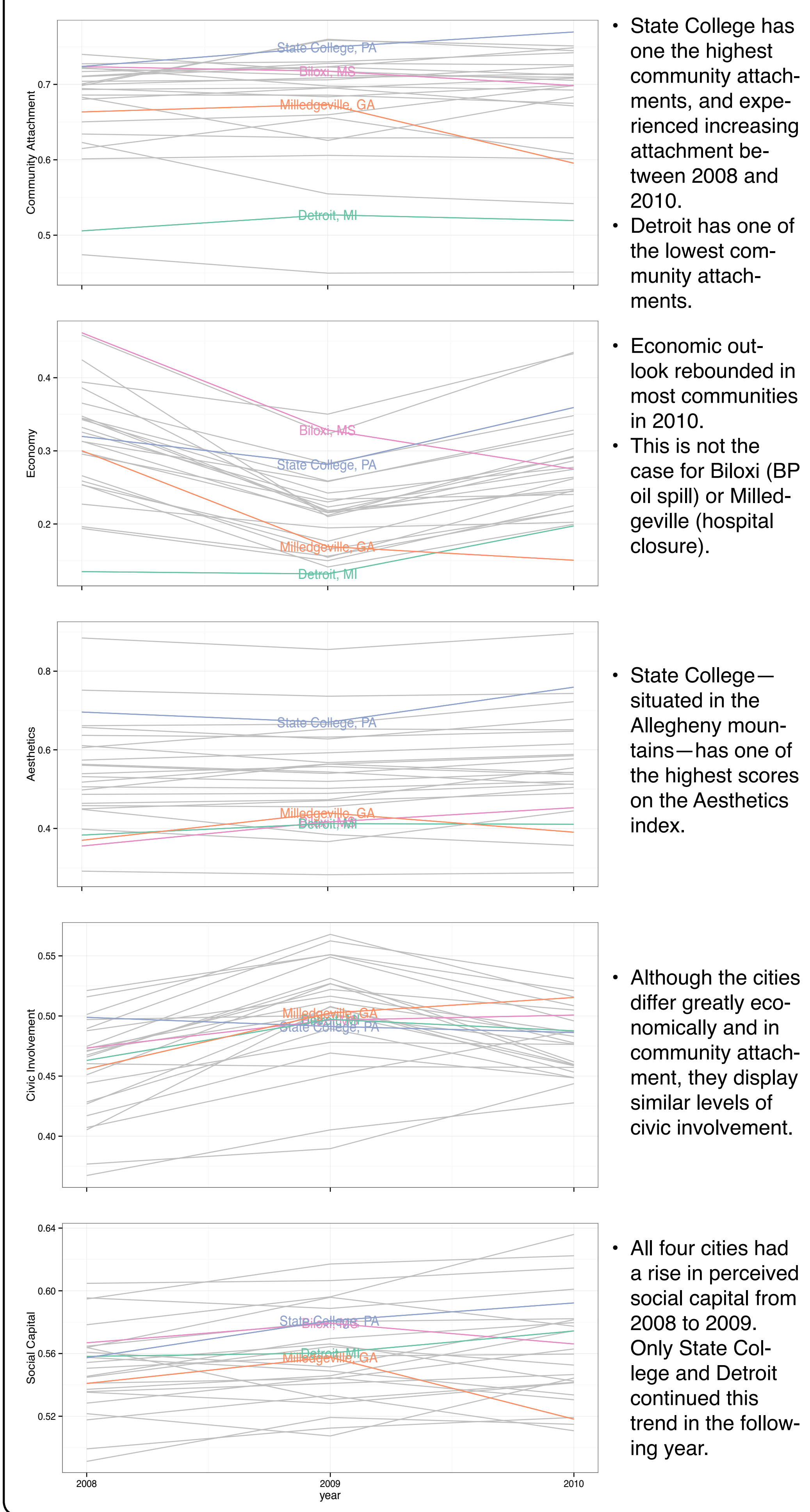


Overview

The data were provided by the Soul of the Community project run by Gallup and the John S. and James L. Knight Foundation. The study began in 2008 and investigates community attachment in 26 cities across the United States. We explore four cities:

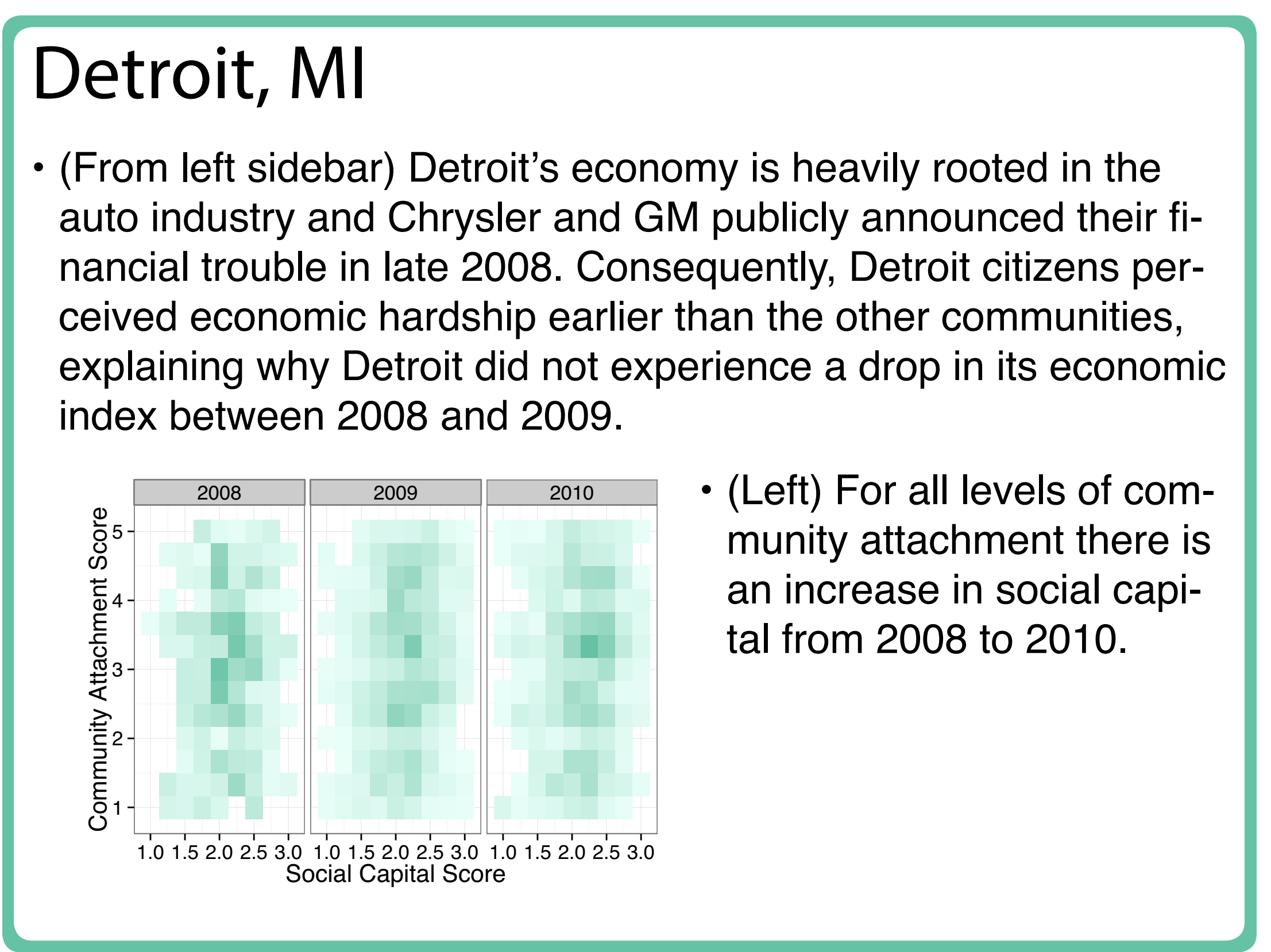
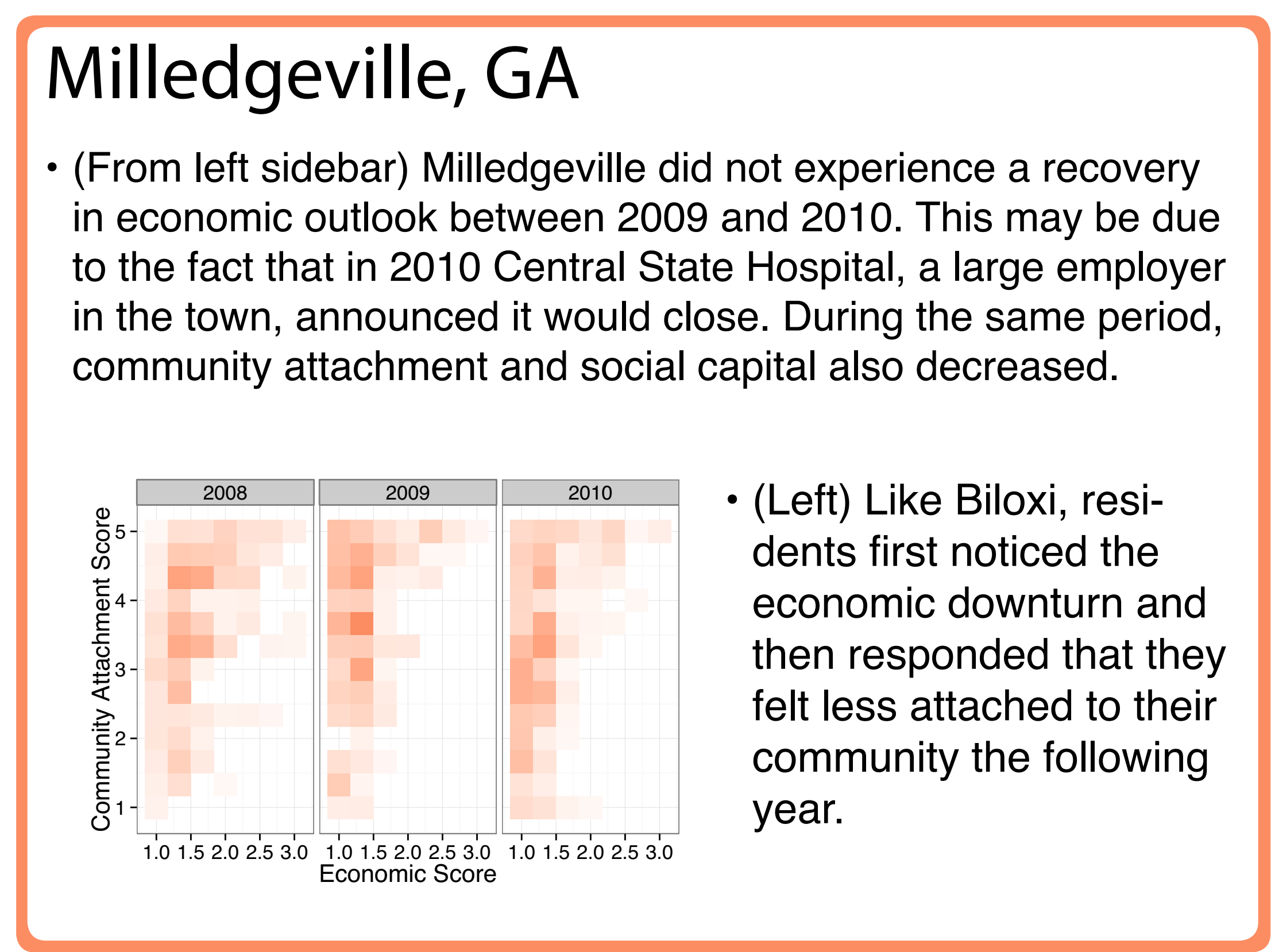
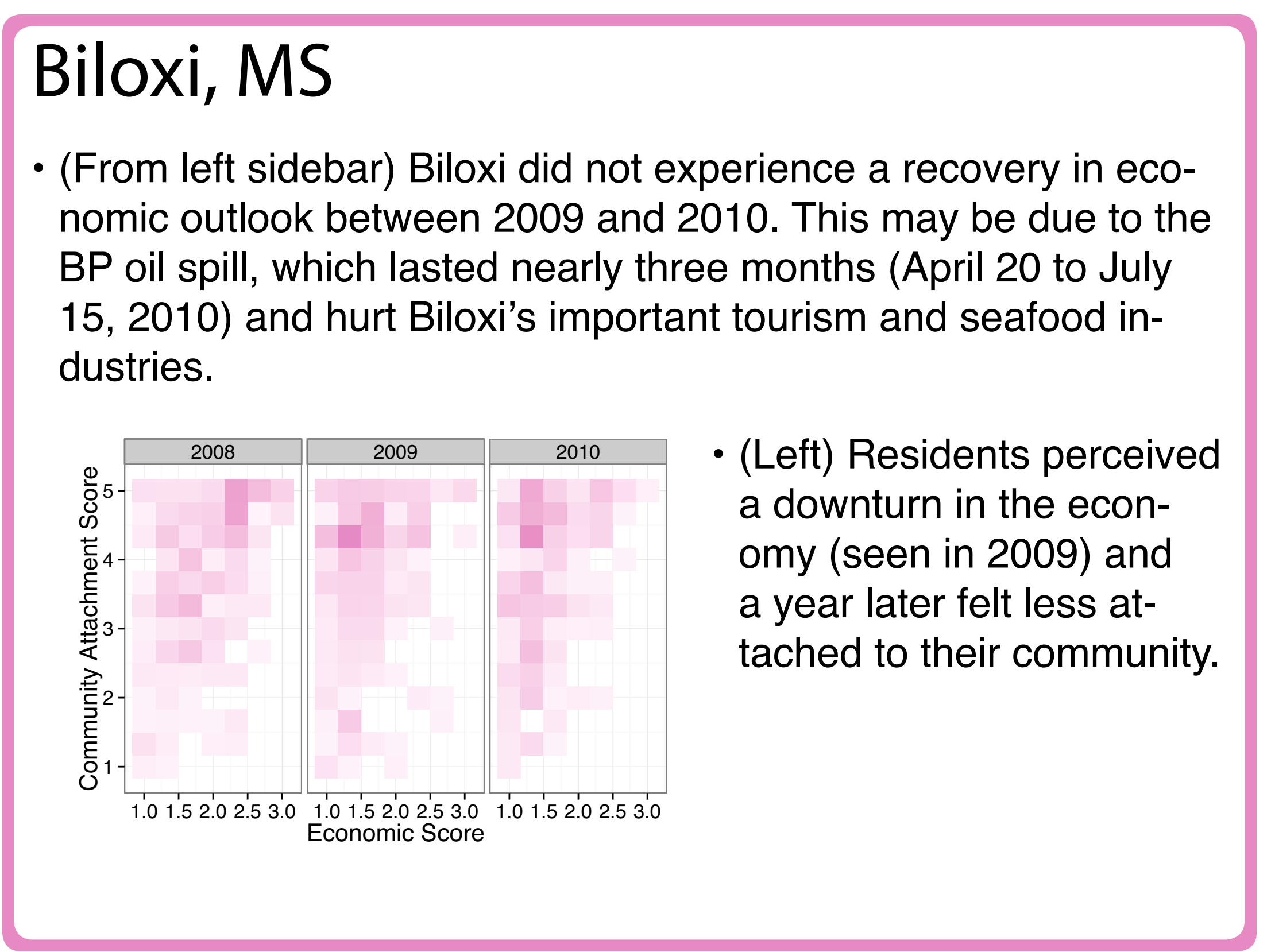
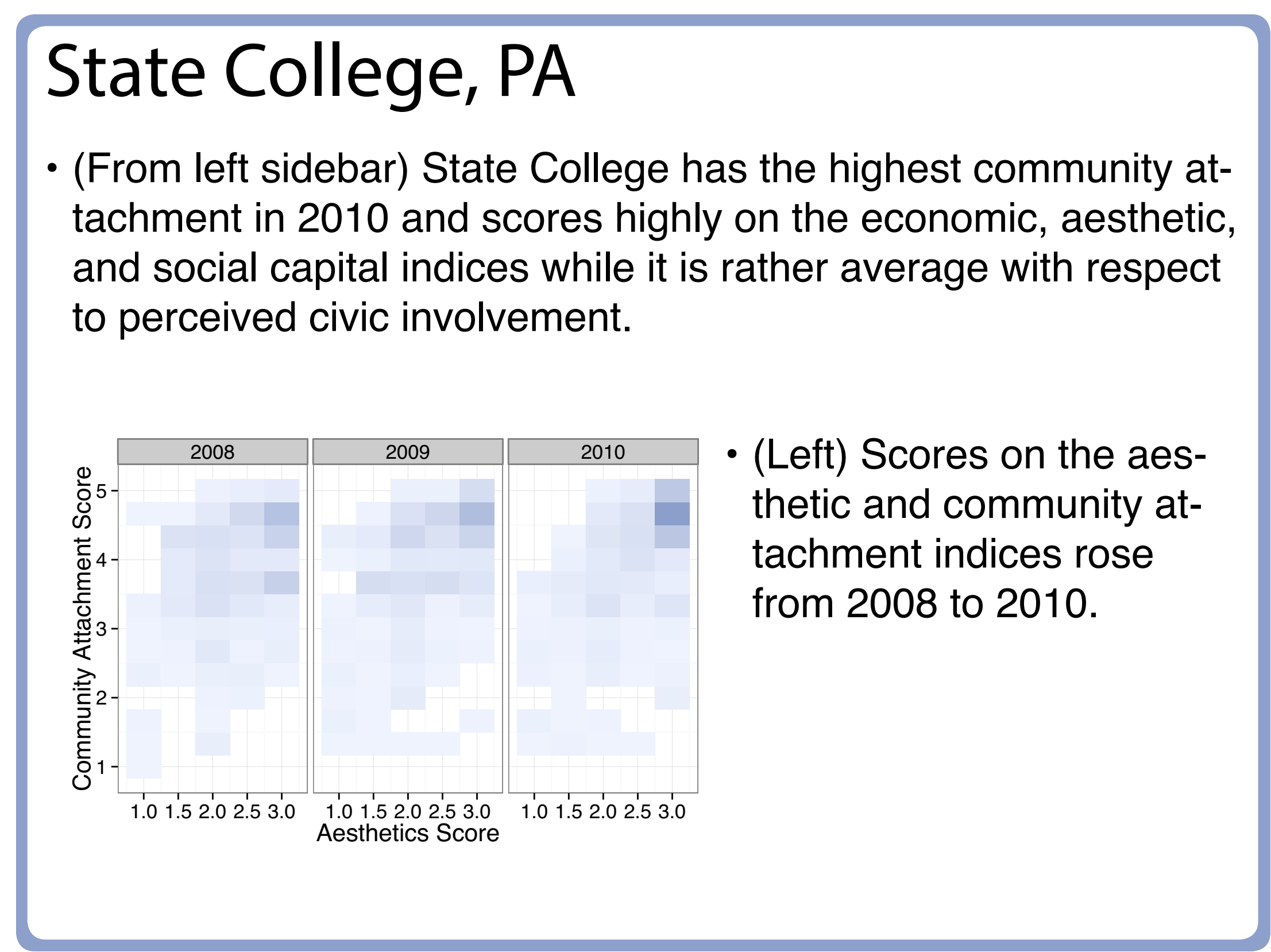
- Biloxi, MS – a gulf coast city affected by the BP oil spill
- Detroit, MI – a city recovering from the auto industry collapse
- Milledgeville, GA – a town down on its luck
- State College, PA – a poster child for community attachment

“It was the best of times, it was the worst of times...”
 Below we use city-level index variables to explore overarching changes in community opinion between 2008 and 2010.



City Spotlights: Zooming in on the Cities and their Residents

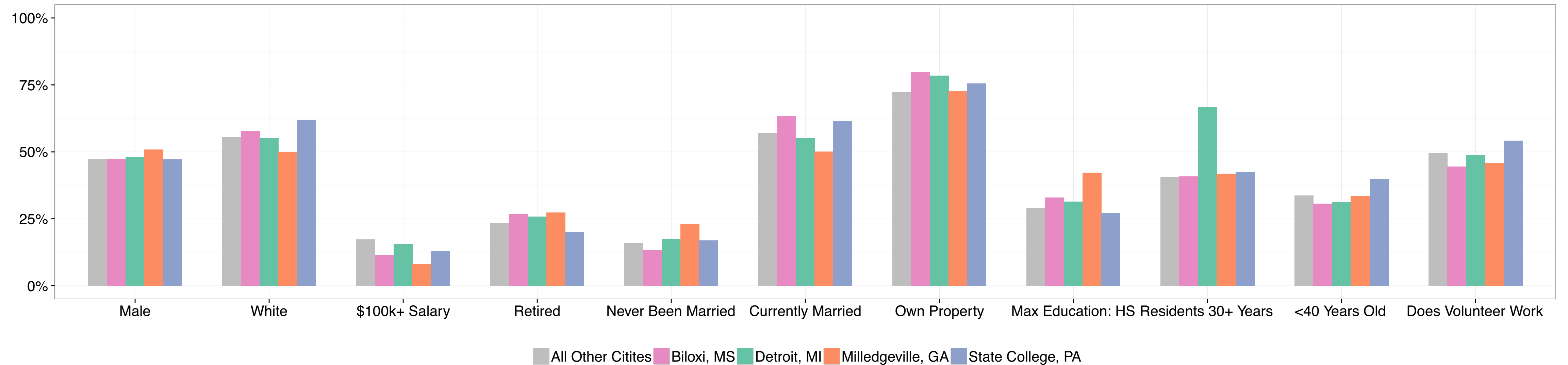
In the plots below use binned scatterplots to display resident-level variables adjusted for survey weights.



How do They Compare?

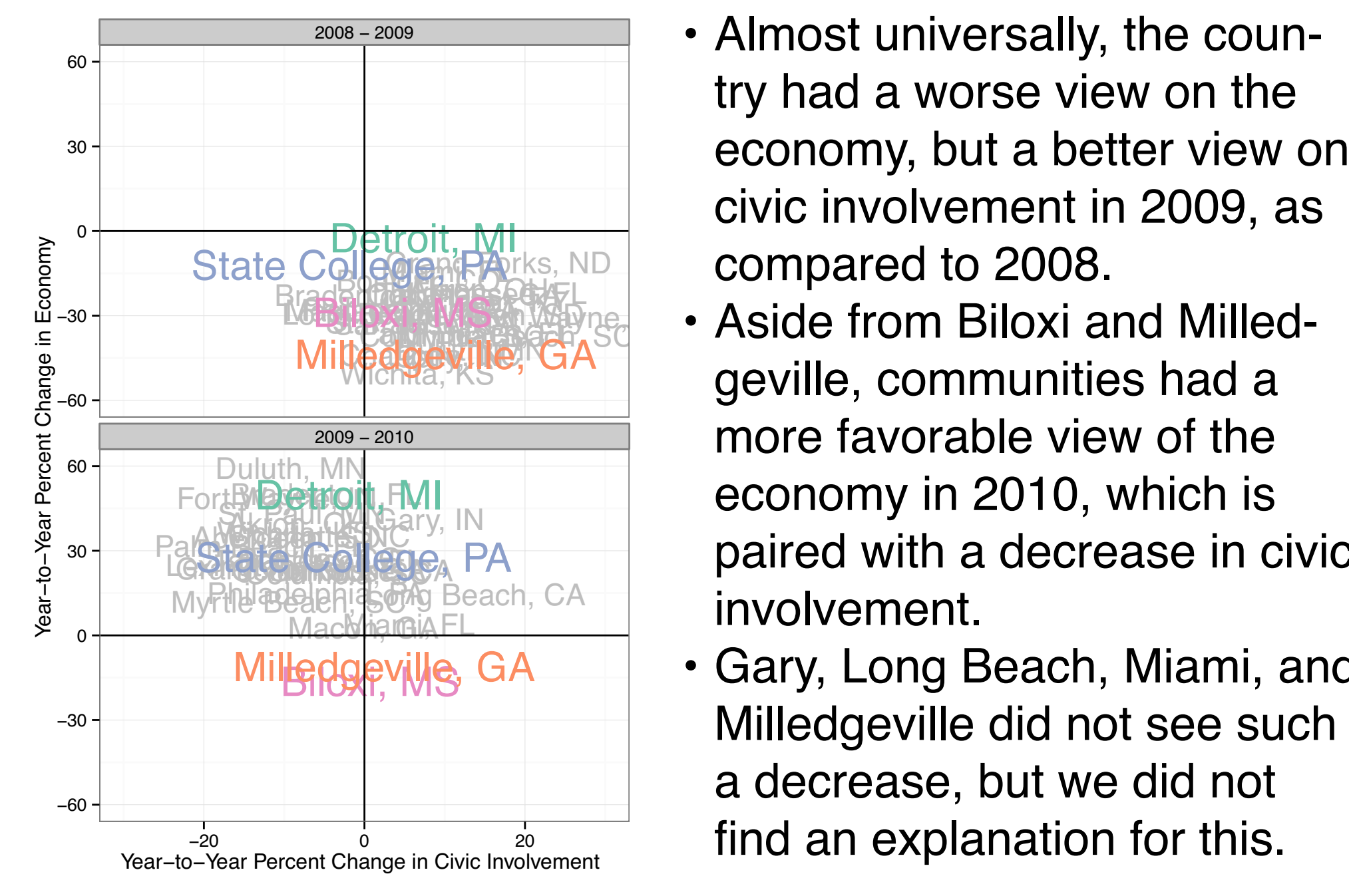
The four cities are not overly different than the others surveyed. The main differences are:

- Milledgeville has more citizens with at most a high school education
- Detroit has far more long-term residents (30+ years)

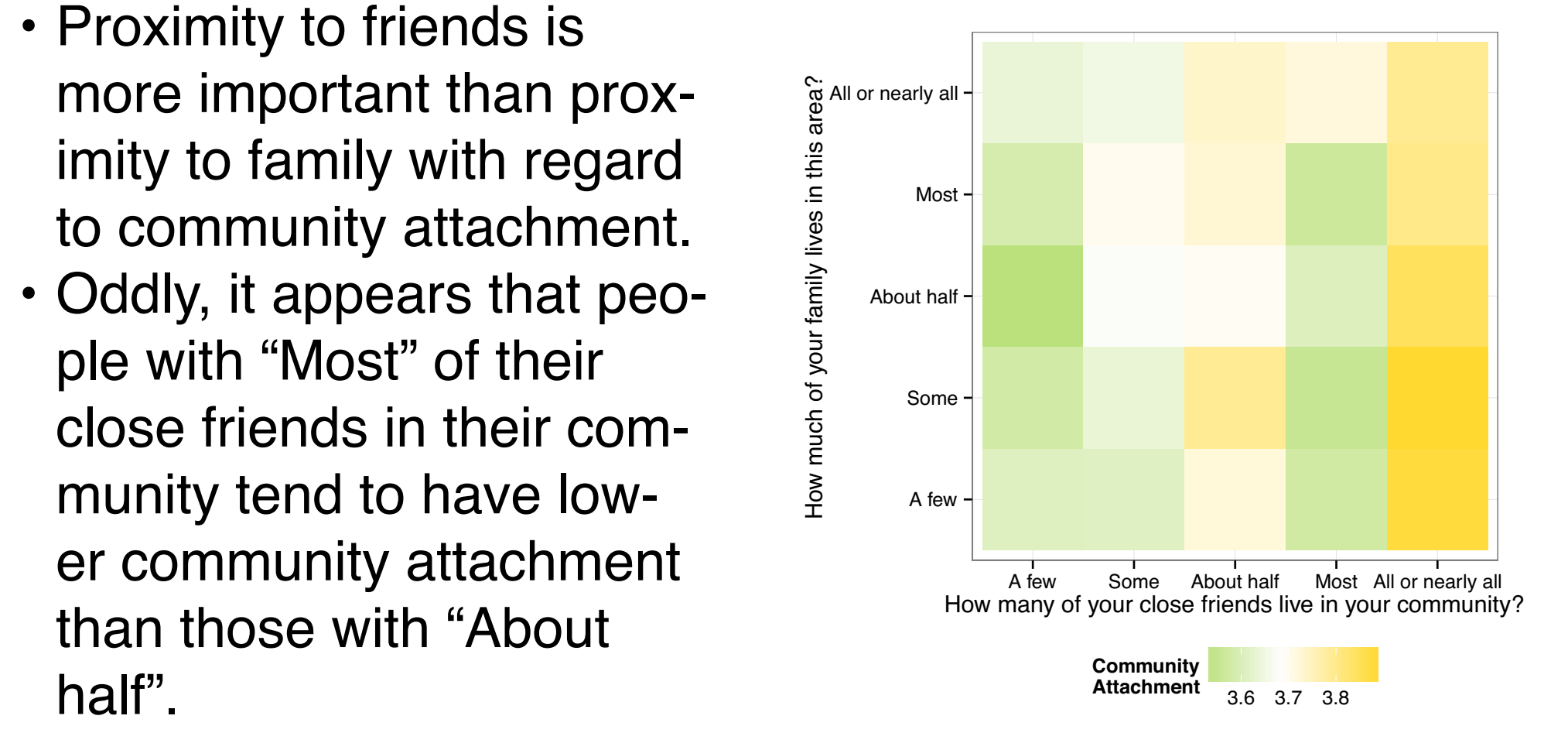


Digging a Little Deeper

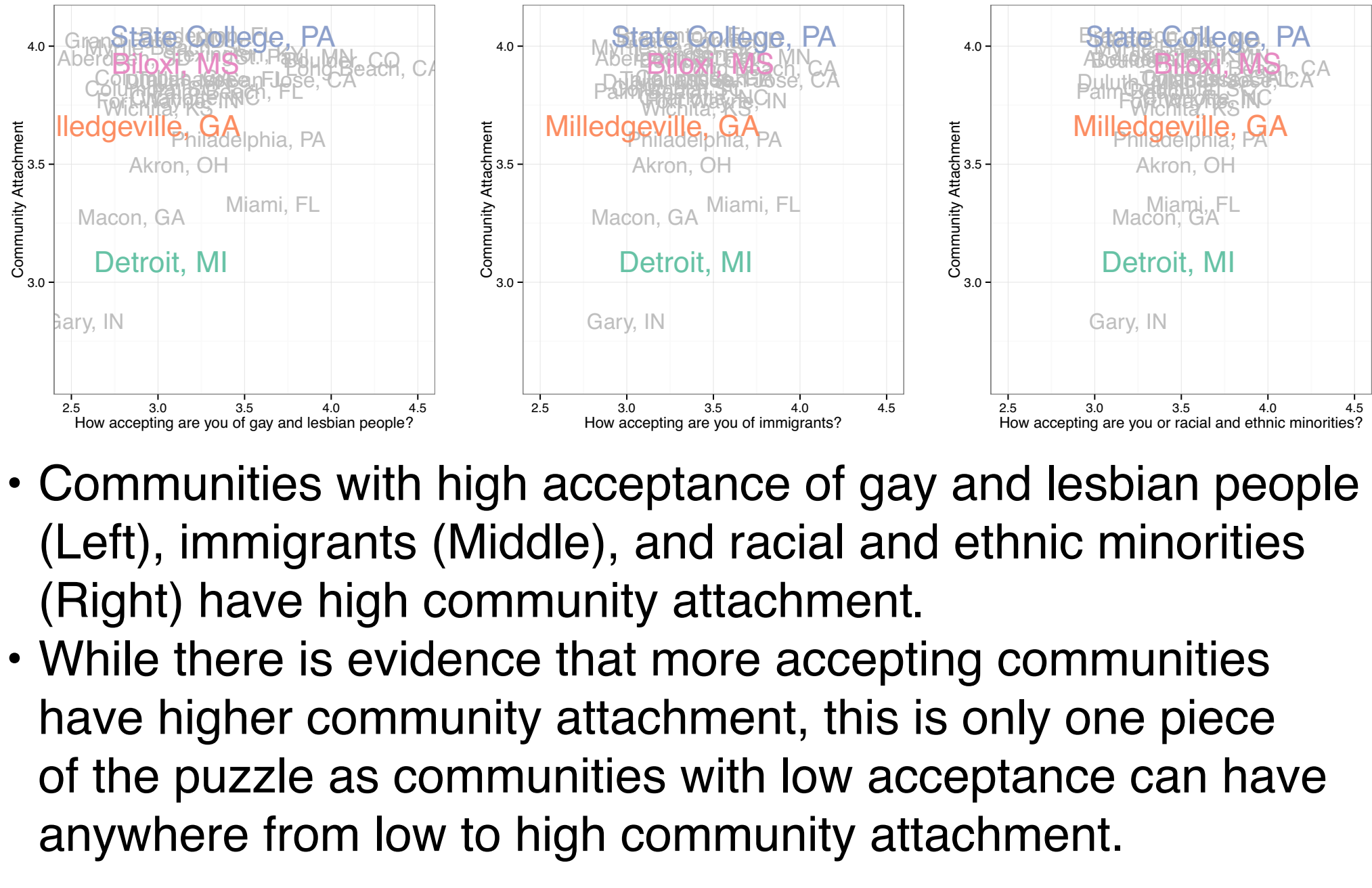
How are the economy and civic involvement related?



What's more important: friends or family?



Are people more attached to accepting communities?



Tools Used

R + ggplot2, RColorBrewer, plyr, reshape2, gridExtra